

> **STANDARD RANGE**

Sherlo Rx Data Code Hopping ASKDRX

SW72-3

- Data Receiver to be used with SW88-1
- Code hopping



Sherlo 14 Channel Module 64 User

SW88-1

- 14 x 1A Relay outputs
- 64 x Remotes per Channel
- 1 sec, 3 sec, Latching
- Siren output
- LED Outputs with 1k Resistors on-board
- Input Voltage Range 12 - 24V



> **LONG RANGE**

Sherlo Transmitter 1 Channel Trinary ST4001P

SW55-1

- For use with all Sherlo trinary receivers
- Frequency: 403MHz
- 1 Channel
- Trinary encryption



Sherlo Transmitter 1 Button Code Hopping Pendant PTX1

SW81-7

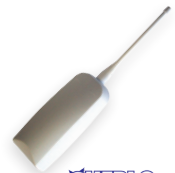
- Code-hopping encryption
- Unique antenna design incorporating the pendant chain increases the operating range by 50%
- Frequencies available are 403.55MHz and 433.92MHz
- 12V Battery operation (GP23A Alkaline Cell)
- LED Flashes when there is a low battery condition



Sherlo Transmitter 4 Channel 1.5km Code Hopping S4

SW135

- Code-hopping technology
- Input voltage: 12 - 24VDC or 9 - 22VAC
- Frequency of operation: 403MHz
- 4 Channel
- 2km Range - line of sight



LONG RANGE
Sherlo 1 Channel 500m Code Hopping Receiver RX1-500
SW80

- Code-hopping encryption
- Latch or momentary relay contacts
- Multiple relay times selectable (1sec;3sec;1min;3min)
- On-board buzzer sounds on activation
- Frequencies available are 403.55MHz and 433.92MHz
- Up to 32 remotes per channel


Sherlo 4 Channel 500m Code Hopping Receiver RX4-500
SW80-4

- Code-hopping encryption
- Latch or momentary relay contacts
- Multiple relay times selectable (1sec;3sec;1min;3min)
- On-board buzzer sounds on activation
- Frequencies available are 403.55MHz and 433.92MHz
- Up to 32 remotes per channel


Sherlo Fixed Wireless Waterproof Tx Code Hopping 3V WMTX
SW82-5

- Audible Piezo output
- Weather-proof ABS housing
- 3V Long Life Lithium battery
- Code-Hopping Encryption


Sherlo Kit 200m Trinary SS5002
SW54

- Input voltage: 12~24VDC or 9~22VAC
- Frequency of operation: 403MHz
- 9 Way trinary encryption
- Bandwidth < 250KHz
- Switching capacity: Single pole relay NO/NC (5A DC)
- Amplitude demodulation


Sherlo 2 Channel PIR Transmitter PIR-TX
SW83

- Alarm and Tamper transmit outputs (2Channels)
- Powered by 2 x Low cost AA Alkaline batteries
- Normally open or normally closed wiring
- Tamper enabled or disabled
- System alive signal output every 4 hours



▶ **LONG RANGE**

CODEX 1 Channel Extended Non-Latch Receiver

SW07

- Extended range for larger sites
- Operates with up to 15 Codex 1, 3, 4 or 5 button transmitters
- Enables selection of personalised security code
- Input voltage: 12V - 24VDC or 9V - 22VAC
- Frequency of operation: 433MHz



CODEX Pendant Transmitter

SW08

- Utilises highly secure encrypted rolling code
- Technology with up to 64 billion possible codes
- Frequency of operation: 433MHz



ET Transmitter 3 Channel Outdoor High Power RC Dual 434

SW71

- Rolling code encryption
- Three independent channels
- High power up to 900m line-of-site
- Compatible with all ET Blue receivers
- Outdoor weatherproof conduit housing



BARTRONICS 1 Button Transmitter Super Trinary

SW65-6

- External antenna for extended range
- Utilises trinary code technology
- For use with all Bartronics receivers
- 1 to 6 Button remotes available



BARTRONICS 2 Button Transmitter Super Trinary

SW65-7

- External antenna for extended range
- Utilises trinary code technology
- For use with all Bartronics receivers
- 1 to 6 Button remotes available



BARTRONICS 4 Button Transmitter Super Trinary

SW65-9

- External antenna for extended range
- Utilises trinary code technology
- For use with all Bartronics receivers
- 1 to 6 Button remotes available



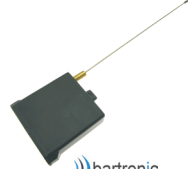
LONG RANGE
BARTRONICS 6 Button Transmitter Super Trinary
SW65-10

- External antenna for extended range
- Utilises trinary code technology
- For use with all Bartronics receivers
- 1 to 6 Button remotes available


BARTRONICS 1 Channel External Receiver Multitek
SW70

- 1 Channel
- Binary / trinary or French coding
- 403MHz
- 200m Extended range

Also Available:

 2 Channel: **SW64-2**

MAMI RKU TG1 1km Transmitter
SW102

- 1 Channel
- Hand held transmitter
- Frequency: 404Mhz
- 1km Range
- 4 Channel transmitter also available


M.A.M.I.
MAMI Fixed Receiver 4 Channel RKU R4
SW94-1

- Digitally-coded FM remote control
- Controls up to 4 channels
- 1-3km
- 12VDC, 300mA Power supply
- 404MHz


M.A.M.I.
MAMI Aerial Folded HOG
SW95

- UHF Extended range antenna
- For use with all MAMI fixed transmitters & receivers
- 404MHz


M.A.M.I.
TOWNHOUSE RECEIVERS
Sentry Complex Receiver
SW108-8
10

- Single channel 433MHz receiver
- 1000 Transmitter locations
- RS232 Serial data Input
- 5 Amp potential free relay contacts
- Programmable via 4 buttons and LED display

