

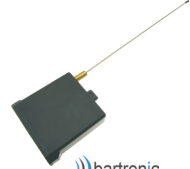
LONG RANGE
BARTRONICS 6 Button Transmitter Super Trinary
SW65-10

- External antenna for extended range
- Utilises trinary code technology
- For use with all Bartronics receivers
- 1 to 6 Button remotes available


BARTRONICS 1 Channel External Receiver Multitek
SW70

- 1 Channel
- Binary / trinary or French coding
- 403MHz
- 200m Extended range

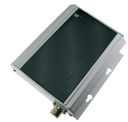
Also Available:

 2 Channel: **SW64-2**

MAMI RKU TG1 1km Transmitter
SW102

- 1 Channel
- Hand held transmitter
- Frequency: 404Mhz
- 1km Range
- 4 Channel transmitter also available


M.A.M.I.
MAMI Fixed Receiver 4 Channel RKU R4
SW94-1

- Digitally-coded FM remote control
- Controls up to 4 channels
- 1-3km
- 12VDC, 300mA Power supply
- 404MHz


M.A.M.I.
MAMI Aerial Folded HOG
SW95

- UHF Extended range antenna
- For use with all MAMI fixed transmitters & receivers
- 404MHz


M.A.M.I.
TOWNHOUSE RECEIVERS
Sentry Complex Receiver
SW108-8
10

- Single channel 433MHz receiver
- 1000 Transmitter locations
- RS232 Serial data Input
- 5 Amp potential free relay contacts
- Programmable via 4 buttons and LED display



> TOWNHOUSE RECEIVERS

Digi Receiver E-Key Complex

SW134-1

- Single channel code hopping coding
- 5000 Transmitter locations
- Transmitter deleting by single unit or in blocks of 5
- 7 Segment display



digitronic

ET Receiver Condo Rolling Code 434 MHz

SW42-8

- Keeloq® Rolling-code format - high level of security
- Frequency: 433.92MHz
- 999 Individually programmable user codes
- Digital display - turns off in Power Save mode



E.T. SYSTEMS

SUPANOVA Townhouse Receiver 433 MHz

SW46-5

- Selectively add and delete users
- Self-learning of transmitters
- 1000 User groups available
- Three channel output for greater functionality
- Programming module separate from receiver
- Back-up memory module
- Three digit LED display for easy programming and diagnostics



CENTURION

Smart Townhouse Receiver 433MHz

SW46-1

- Self-learning technology
- Each transmitter has a unique code
- Very secure
- SMART 2 Is fully compatible with all existing SMART equipment
- 433MHz
- 12 - 24VAC/DC
- Operates up to 125 single Button remotes



CENTURION

Sherlo Receiver 4000 User Complex Code Hopping

SW80-9

- Performance: 150m line-of-sight
- 4,000 x Transmitters per relay (500 Banks with 8 Users per bank)
- 0.6 - 3 Second relay closure setup
- 12V - 24V AC/DC Voltage input
- On-board buzzer and 5 x program buttons
- 2,000 Real-time date event logging
- RS232 Output wiring port
- IP65-Rated housing



SHERLO TRONICS