

▶ ELECTROMAGNETIC LOCKS

Maglock SP 150Kg with LED

LK117

- 150Kgs holding force
- Operating voltage 12VDC
- Current draw 300mA / 150mA
- MOV surge protection
- Fail-safe type
- Unmonitored model
- CE approved
- Dimension: 170mm (L) x 36mm (W) x 24mm(D)



elock

Maglock SP 300Kg with LED

LK118

- 300Kgs holding force
- Dual voltage 12 and 24VDC
- Current draw 500mA / 250mA
- MOV surge protection
- Fail-Safe type
- Monitored (with LED, Hall effect IC and NO/NC relay)
- CE approved
- Dimension: 250(L) x 41(W) x 26(D) mm



elock

Maglock SP 600Kg with LED

LK119

- 600Kgs holding force
- Dual voltage 12 and 24VDC
- Current draw 500mA / 250mA
- MOV surge protection
- Fail-safe type
- Monitored (with LED, Hall effect IC and NO/NC relay)
- Push-off button on armature for instant release
- CE approved
- Dimension: 265mm (L) x 66mm (W) x 20mm (D)



elock

Maglock Stainless Steel 360Kg Outdoor

LK126

- Dual voltage: 12/24VDC, 500/250mA
- Monitored with reed sensor only, (NO/NC dry contact)
- MOV surge protection
- CE approved
- Dimension: 220mm (L) x 46mm (W) x 29mm (D)



elock

Maglock Stainless Steel 550Kg Outdoor

LK127

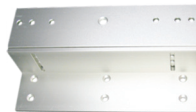
- Dual voltage: 12/24VDC, 500/250mA
- Monitored with reed sensor only, (NO/NC dry contact)
- MOV surge protection
- CE approved
- Dimension: 220mm (L) x 66mm (W) x 40mm (D)



elock

ELECTROMAGNETIC LOCKS**Bracket ZL for Maglock LK117****LK117-1**

- For use with SP 150Kg Maglock (LK117)

**elock****Bracket L for Maglock LK117****LK117-2**

- For use with SP 150Kg Maglock (LK117)

**elock****Bracket U for Maglock LK117****LK117-3**

- For use with SP 150Kg Maglock (LK117)

**elock****Bracket ZL for Maglock LK118****LK118-1**

- For use with SP 300Kg Maglock (LK118)

**elock****Bracket L for Maglock LK118****LK118-2**

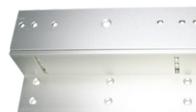
- For use with SP 300Kg Maglock (LK118)

**elock****Bracket U for Maglock LK118****LK118-3**

- For use with SP 300Kg Maglock (LK118)

**elock****Bracket ZL for Maglock LK119****LK119-1**

- For use with SP 600Kg Maglock (LK119)

**elock**

▶ ELECTROMAGNETIC LOCKS

Bracket L for Maglock LK119

LK119-2

- For use with SP 600Kg Maglock (LK119)



elock

Bracket Z for Outdoor Maglock LK126 and LK127

LK128

- For use with LK126 and LK127 outdoor maglocks



elock

Bracket L for Outdoor Maglock LK126 and LK127

LK128-1

- For use with LK126 and LK127 outdoor maglocks



elock

SEP Maglock Surface Mount with Quick Mount Bracket

LK55

- SEP 230 / 54S and B
- 12VDC
- Side mount
- Slim-line and bracket



SEP Maglock 300kg Front Mount

LK57

- SEP 200 / 54F
- 12VDC
- Face mount
- Slim-line



SEP Maglock Quick Mount Bracket

LK61

- SEP Mounting brackets for all side mount applications



SEP Maglock U-Bracket

LK62

- SEP Mounting brackets for all glass mount applications



SEP Maglock Z-Bracket

LK63

- SEP Mounting brackets for all top and side mount applications



ELECTROMAGNETIC LOCKS

Bolt Action Lock SP (Fail Safe)
LK120

- 12VDC Operation
- Operation current 900mA
- Holding current 350mA
- Fail safe type - power to lock
- Operation delay time: 0 sec, 2.5 sec, 5 sec, 9 sec
- Built-in delayed egress, control point



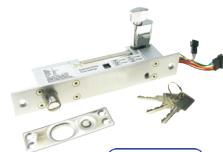
SECURI-PROD

Surface Mount Bracket
LK120-1

- Surface mount housing for LK120
- Lock housing dimensions: 230mm (L) x 44mm (W) x 44mm (D)
- Receptacle housing dimensions: 120mm (L) x 44mm (W) x 44mm (D)


Bolt Action Lock SP (Fail Secure)
LK121

- 12VDC Operation
- Operation current 900mA
- Holding current 350mA
- Fail-secure type - power to open
- Operation delay time: 0 sec, 3 sec, 5 sec, 9 sec
- Built-in delayed egress, control point



SECURI-PROD

Surface Mount Electric Dead Bolt Lock
LK124-1

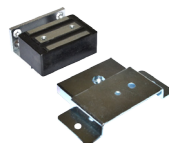
- Suitable for 90° to 180° hollow metal or solid wooden doors
- Adjustable lock time.
- Power Supply: 12VDC
- Power consumption: 360mA (standby); 570mA (operation)
- Automatic current output control according to the door leaf position



SECURI-PROD

Mini Electromagnetic Lock
LK132

- Fail-safe (power to lock) electric lock
- Power input: 12VDC /150mA
- Low operating current: 150mA (@12VDC)
- Holding force (Max): 80Kg / 12VDC



SECURI-PROD

ELECTROMAGNETIC LOCKS

Shear-Lock

LK130

- Compact all-in-one design
- Maximum shear force: 1,200kg, maximum magnetic suction up to 5mm (@24VDC)
- Built-in micro controller with door open delay time and door position detection outputs
- Suitable for all types of 90° to 180° open aluminium or wooden doors
- Repeated locking function. Automatic repeated locking (maximum 60 times) when door is not locked at the correct position
- Power Supply: 12/24VDC (auto-adjusting)
- Operating current: 900mA
- Standby current: 220mA@12VDC / 190mA 24VDC



SECURI-PROD

