



ELECTRIC LOCKS

Electric Latch Release Inward Opening

LK40

- Lockable button
- Sturdy construction
- All parts galvanised or brass
- 12VDC or 16VAC Operation
- Microswitch for monitoring
- Left or right hand operation
- Ideal for wooden gates or steel gates (use LK41 kit)
- Mounting hardware provided



Electric Latch Release Outward Opening

LK42

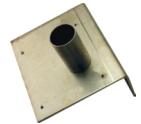
- Lockable button
- Sturdy construction
- All parts galvanised or brass
- 12VDC or 16VAC Operation
- Microswitch for monitoring
- Left or right hand operation
- Ideal for wooden gates or steel gates (use LK39/LK41 kit)
- Mounting hardware provided



Wrought Iron Gate Kit Left Hand Plate

LK39

- Galvanised plate with pre-drilled and tapped mounting holes
- Stainless steel tube for key barrel



Wrought Iron Gate Kit Right Hand Plate

LK41

- Galvanised plate with pre-drilled and tapped mounting holes
- Stainless steel tube for key barrel

