

**ELECTRIC DOOR STRIKES****Electric Door Strike Continuous Standard****LK17**

- Flush mount striker lock
- Continuous action
- 12VDC or 12VAC Operation

**Electric Door Strike Pre-Impulse Standard****LK20**

- Flush mount striker lock
- Pre-impulse action
- 12VDC or 12VAC Operation

**Electric Door Strike - Surface Mount Standard****LK20-1**

- Surface mount striker Lock
- Includes surface mount plate and mounting spacers
- Pre-impulse action
- 12VDC or 12VAC Operation

**Electric Door Strike Housing****LK18**

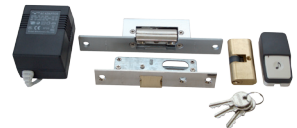
- Powder coated steel striker lock housing
- For surface mounting
- Dimensions : 175mm x 41mm x 42mm

**Surface Mounted Housing for Striker****LK21**

- Black powder coated steel casing
- Facilitates surface mounting for LK20 and LK17 striker locks
- Dimensions : 145mm x 37mm x 26mm
- Includes plastic mounting spacers

**Electric Door Strike Kit 15mm T1****LK20-3**

- Electric strike and 15mm lock kit includes striker lock, 15mm door lock with oval cylinder, 3 keys, exit push button 12VDC 0.5A power supply and mounting screws

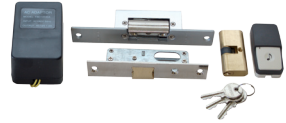


**ELECTRIC DOOR STRIKES**

**Electric Door Strike Kit 15mm T2**

**LK20-4**

- Electric strike and 15mm lock kit includes striker lock, 15mm door lock with oval cylinder, 3 keys, exit push button 12VAC 1.2A bell transformer and mounting screws



**Electric Door Strike Kit 25mm T1**

**LK20-6**

- Electric strike and 25mm lock kit includes striker lock 25mm door lock with euro cylinder, 3 keys, exit push button 12VAC 1.2A bell transformer and mounting screws



**SECURITY LOCKS**

**Padlock Tricircle 32mm Brass**

**LK79**

- Hardened steel shackle
- Solid brass lock case
- Supplied with 3 keys



**Padlock Tricircle 50mm Brass**

**LK79-1**

- Hardened steel shackle
- Solid brass lock case
- Supplied with 3 keys



**Padlock Insurance 70mm**

**LK79-3**

- Steel ball locking mechanism
- Solid brass lock case
- Supplied with 2 keys



**Padlock Insurance 90mm**

**LK79-3-1**

- 90mm Brass monoblock
- Hardened shackle
- Ideal for Centurion Anti-Theft bracket

